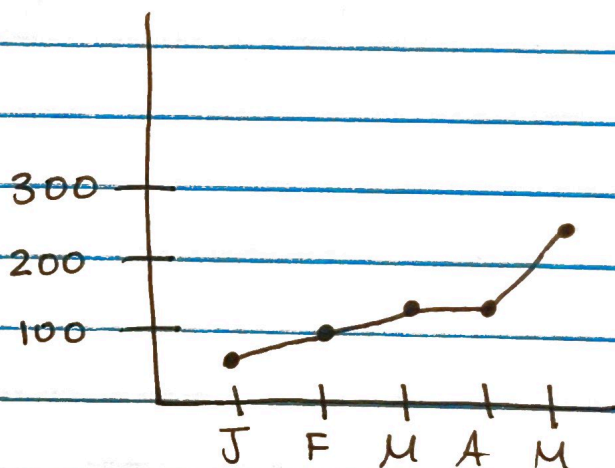
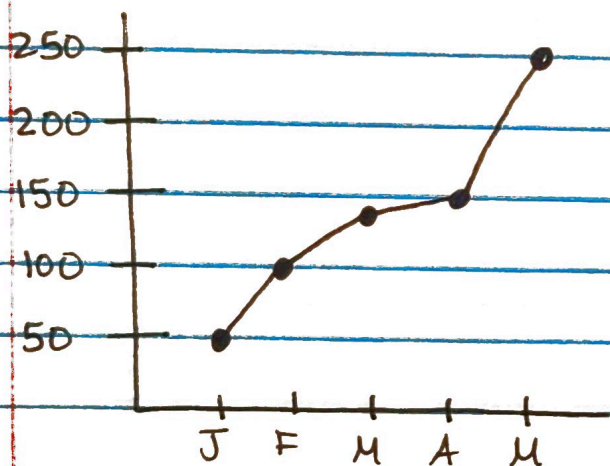


Section 10-3 Displaying Data Part II

1. Line Graph (Time Series Graph)

This graph is useful for showing trends, especially over time.

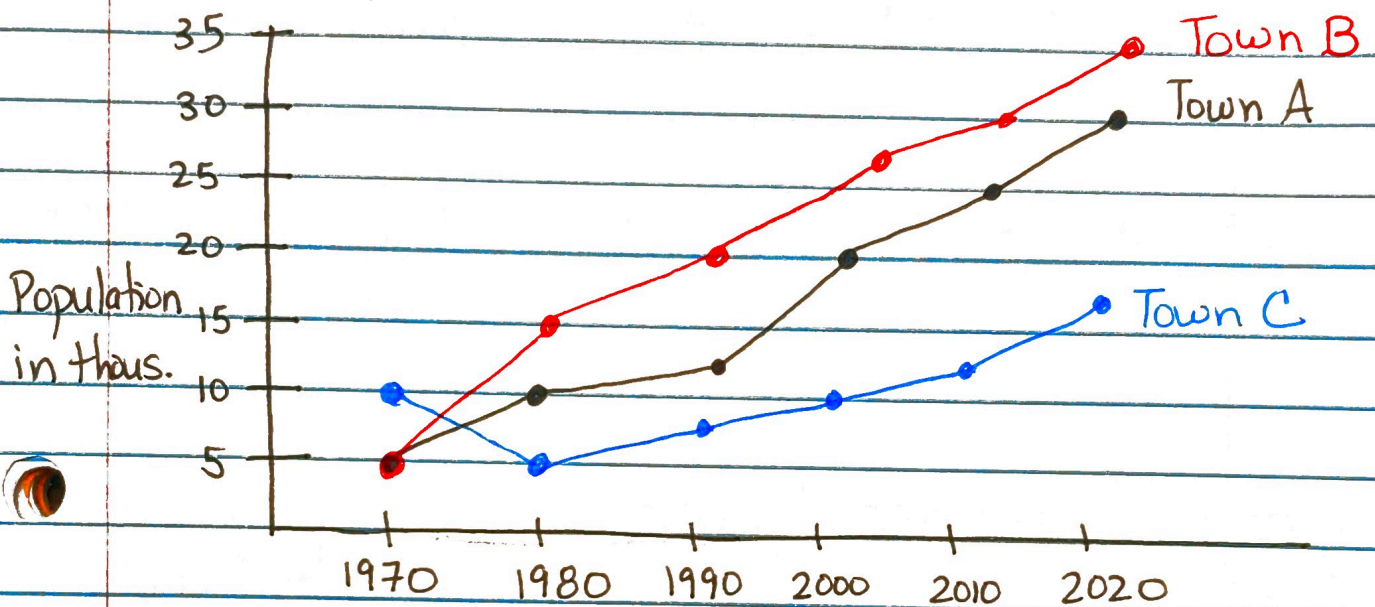
A line graph can be easily modified to be misleading by changing the scale.



New Covid Cases each month
in a particular town

2. Multiple Line Graph

These are used to show similarities and/or differences in data over the same period of time.



* We will not cover scatter plots. *

ex | Choose the most appropriate graph type. Use each type only once.

- Bar Graph
- Histogram
- Line Graph (Time Series)
- Pie Graph

a) Your monthly bills broken into 7 categories
Pie Graph

b) A list of 6 different makes of cars and their corresponding miles per gallon.
Bar Graph

c) The age of a car in years and the corresponding number of dollars the car is worth.
Line Graph

d) The list of the top 200 times of Chicago marathon runners that shows the number of runners in each time interval.
Histogram

end 10-3